

Appendix

Central Bedfordshire Safeguarding Children Board: Annual Report 01 April 2012- 31 March 2013

The Effectiveness of Safeguarding
children and young people
in Central Bedfordshire



Contents

- 1 Independent Chair's Introduction and Summary of Safeguarding Children
 - 2 Central Bedfordshire in context
 - 3 Governance and accountability
 - 4 Child Protection Activity & Performance in Central Bedfordshire
 - 5 Audit and challenge
 - 6 Engagement with & participation of children
 - 7 Achieving our priorities
 - 8 Multi-Agency training
 9. Priorities for CBSCB for 2013-14
- Glossary
Appendix A – CBSCB Governance structure
Appendix B – Membership Information
Appendix C – Multi-agency training
Contact...

The Central Bedfordshire Safeguarding Children Board Annual Report 2012 – 2013, has been contributed to by all CBSCB Board members and produced by the CBSCB Independent Chair and Business Manager.

The report was approved by the Board at their meeting in September 2013.

The publication of an annual report summarising the work of the Central Bedfordshire Safeguarding Children Board (CBSCB) and assessing the state of safeguarding across the partnership is a requirement of the statutory framework within which Safeguarding Boards work.

1. Independent Chair's introduction and summary of safeguarding children

This report for 2012-13 is my second annual report since becoming Chair of CBSCB. The year has been one of considerable change for local partners with the reorganisation of the PCT into a Clinical Commissioning Group, the introduction of the Health and Wellbeing Board as a strategic driver for developing services, and the election of the first Police and Crime Commissioner. In Central Bedfordshire these changes had less immediate impact on safeguarding than was foreseen at the time of writing the last Annual Report when I expressed my concerns about continuity. The Board was fortunate that the lead NHS directors responsible for safeguarding and the designated NHS professionals transferred into the new CCG and therefore continuity, which was at risk, has been maintained. In autumn 2012, the shadow Health and Wellbeing Board met with the CBSCB Chair to discuss last year's annual report and the Board's members were very open to developing positive relationships between the two Boards for the future.

2012-13 started with partners receiving the Ofsted report into safeguarding in Central Bedfordshire which judged overall safeguarding performance as 'Good'. During the year, the plan to deal with the areas for improvement identified in the Ofsted Report was implemented by the partners, led by the Central Bedfordshire Council. As lead partner in the Board, the Council remains very committed to the safeguarding agenda at both the Director and elected Member level and this is seen in practice in both CBSCB and the Children's Trust's work. Generally the other partners have also shown considerable commitment to the Board, both by their contribution to meetings and particularly by their willingness to contribute to the audit and review of cases. As members of three children's safeguarding boards, the Police and Probation Services found it most challenging to maintain consistent representation at Strategic Board meetings. However, this did not reduce their commitment to operational safeguarding or involvement in auditing and review. For all agencies, visible leadership is a key requirement to ensure strong partnership working at all levels. As partners experience transformation, the Board looks for every opportunity to build new relationships which will ensure time at meetings is used to the best interests of children and the partners.

The high national media profile of sexual exploitation helped the Board to raise local awareness of this issue. Working jointly with the Luton and Bedford Safeguarding Boards, significant progress was made in implementing the Government Child Sexual Exploitation Action Plan. Throughout the year, the Board audited and reviewed a range of individual child protection cases to both monitor performance and identify issues for improvement and learning. There were no cases which required a Serious Case Review and the audits did not show a persistent failure in one or more specific aspects of the safeguarding system. The

challenge is more one of achieving a consistent approach to safeguarding in all cases by encouraging professionals to effectively share information and be prepared to challenge their peers when assessing risk; by ensuring that the child is always the focus when dealing with complex family circumstances and by keeping basics of safeguarding children at the forefront of professionals minds at all times. They are consistently reiterated in the Board's briefings and both multi-agency and individual partners' learning events, but there is an obligation on all partners to ensure that this learning brings sustained improvement in practice. During the coming year, in response to our agreed Board priorities, partners will need to continue to improve information sharing and reach a common agreement about whether data sharing processes need to improve further to capitalise on the progress already made.

Bearing in mind the starting point for the year, the financial and management pressure on partners and the degree of change that has taken place, I am pleased with the commitment to safeguarding. The impact of these efforts by both individual partners and the Board, have no doubt improved safeguarding of children over the year. However, there are considerable pressures building in the system and these could derail the good progress which has so far been achieved if they are not appropriately managed.

These pressures include difficulties in maintaining the resilience of paediatric services in the acute hospitals, challenges to recruiting and retaining experienced staff in services such as social care and the general increasing pressures on public sector budgets which may severely test the commitment of organisations to keep safeguarding as a real operational priority in the long term. Such situations are exacerbated in a landscape of changing structures and responsibilities, for example, as schools, which are at the frontline of protecting children, become academies and services for children are increasingly provided by commissioned organisations. In addition, there is a backdrop of the new safeguarding guidelines, the recently agreed disaggregation in the joint working of the CBSCB with Bedford Borough Board and the demands upon operational staff created by increasing numbers of referrals, assessments and protection plans. These changes and risks will be regularly discussed in the CBSCB Board and sub-committee meetings in the coming months to ensure that they are brought to the attention of partners and stakeholders if action is needed.

Safeguarding systems rely very much upon the goodwill and personal commitment of professionals at all levels to share problems and identify solutions. Effectiveness can change relatively quickly if resourcing and resilience falls by the wayside. In the coming months the Board will need to continue to focus on ensuring that its key priorities for 2013-14 – domestic abuse, sexual exploitation and 'early help' – are progressed and that partners are fully aware of their effectiveness in addressing these issues. The local disaggregation of the Board and the new national Working Together guidelines are creating the need for new structures and processes. In the current year, the Board needs to make sure that they are fully embedded across all partners to seize the opportunity for more effective ways of working.

I have mentioned how safeguarding relies so heavily on the commitment of individuals and I would like to take this opportunity to particularly thank the members of the CBSCB Business Unit and the lead representatives in each partner agency for the effort and willingness they have shown over the past year. Many of them have carried on unceasingly working to improve safeguarding even when they have been uncertain of their personal circumstances as their organisation or network of peers change. It is this commitment to children's welfare which gives me optimism for the future of safeguarding in Central Bedfordshire.

In the following pages the report sets out the considerable efforts put into safeguarding children and the achievements of the Board and partners over the year. I have highlighted some of that work but for a fuller understanding of the state of safeguarding in Central Bedfordshire, I urge you to read on.....

A handwritten signature in black ink, appearing to read 'P. R. Stan', with a horizontal line underneath.

Independent Chair
Central Bedfordshire Safeguarding Board

2. Central Bedfordshire in context

Central Bedfordshire has a population of 260,000 people. This is forecast to increase to around 287,300 people by 2021, with a forecast 13% increase in children aged 0-15 between 2011 and 2021 and a corresponding 35% increase in the number of people aged 65 and over during the same period.

Unemployment is low in Central Bedfordshire compared to England, and house prices are higher than the national average, however both are following the national trends in the current economic environment.

Central Bedfordshire residents have better qualifications compared to the national average, but GCSE results are fairly similar to the England average.

Life expectancy and overall health are both slightly better than the national average, and children are less likely to be obese.

Central Bedfordshire is less diverse than England as a whole and has a greater proportion of people who are White British. In 2011 89.7% of the population were White British (79.8% England).

The biggest ethnic minority groups in Central Bedfordshire were White Other (not White British, White Irish or Gypsy or Irish traveller) 2.8%, White Irish 1.2%, Indian 1.0% and other 5.3%.

An online version of key Statistics in Central Bedfordshire can be viewed on the Central Bedfordshire Council website at

<http://www.centralbedfordshire.gov.uk/council-and-democracy/local-government-in-central-bedfordshire/statistics-and-census-information/default.aspx>

Children in Central Bedfordshire

Around 62,000 children and young people between the ages of 0-19 live in Central Bedfordshire and by 2021 it is forecast that there will be about 2,000 more children aged under 16. The number of births in Central Bedfordshire has been around 3,000 for the last three years but has shown an increase between 2003 and 2008 in line with the national trend.

In Central Bedfordshire as at March 31 2013 there were 139 schools (including 1 University Technical College) of which 40 were academies. There are 9 Children's centres in Central Bedfordshire.

At the end of March 2013, 266 children were subject of a child protection plan and 246 children were looked after.

Between April 2012 to December 2012 there were 1858 incidents of domestic abuse in Central Bedfordshire, a 4% decrease on the same time period the previous year. 36% (i.e. 669 cases) of these incidents were noted to have a child living in the household at the time of the abuse. This is also a 4% decrease on the same time period last year.

In Central children who those missing from home and care and those at risk of sexual exploitation are identified as a priority in our business plan priorities. The CBSCB is also acutely aware of private fostering and receives regular reports at Board meetings on performance in this area.

The lead safeguarding agency in Central Bedfordshire is Central Bedfordshire Council (CBC), which is a unitary authority providing social care and education services along with a wide range of other provision such as libraries and leisure services.

3. Governance & accountability

The membership of CBSCB meets all of the statutory requirements set out in the Children Act (2004) and CBC adult social services and adult mental health services are also represented. The Board also has access to appropriate expertise and advice from all the relevant sectors, including a designated doctor and nurse. Recent additional recruitment of members has occurred to meet the membership requirements of Working Together to Safeguarding Children 2013. Details of the Full Membership and attendance details of the Strategic Board for 2012/13 are set out in appendix **XX** along with details of the Board and working groups.

The Strategic Board met on three occasions between April 2012 and March 2013 and is attended by senior representatives from each organisation involved in protecting or promoting the welfare of children. CBSCB demonstrates clear priorities through its business plan and specific areas of achievement such as the impact of multi-agency training and improvements in the quality of practice resulting from multi-agency audits. The CBSCB Independent Chair also meets frequently with the Director of Children's Services and has full access to director level representatives from other partner organisations. The Chair also accounts to and meets regularly with the Chief Executive of the Council.

Representatives from the voluntary sector sit on the Board and are actively engaged in a wide range of strategic and operational groups through the Central Bedfordshire Safeguarding Children Board and Children's Trust. They are able to influence the development of services to support children and families. Strong collaboration between statutory and voluntary sector partners is enhanced through the secondment of some council staff to services provided by voluntary organisations and through some voluntary organisations delivering training to statutory partners.

The Lead Council Member, Cllr Mark Versallion, is a participating observer of the CBSCB who routinely attends the Strategic Board and receives all its written reports. The Deputy Chief Executive / Director of Children's Services ensures that all Local Authority services engage effectively with the CBSCB and is held to account for the effective working of the CBSCB by the Chief Executive and challenged where appropriate by the Lead Member.

Whilst most key partners contribute well to the work of the CBSCB, as the responsibilities of public sector organisations change there is a need to have increasing involvement of key players such as GPs and schools. The Board has worked with these partners to secure their active contribution and this work continues.

Joint Working

Joint working with other Safeguarding Boards is a particular feature of CBSCB reflecting the practicalities of many partners, such as the police, probation and health organisations who work across the Bedford and Luton Safeguarding Boards areas. In the past year the work of CDOP, and the Child Sexual Exploitation (CSE) Task and Finish Group are examples of successful joint working by the three Boards and the Joint Steering Group and Performance sub-group serve both Bedford and Central Beds areas. Joint working arrangements are being reviewed to ensure that they appropriately serve the needs of all three Boards. The outcome of this work is available on the CBSCB website (insert link).

The CBSCB has effective relationships with the Health and Wellbeing Board and the Children's Trust. It fully contributes to the local Children and Young Peoples Plan, which includes a wide range of multi-agency initiatives to protect children and keep them safe by;

- Protecting children and young people from harm by providing a co-ordinated and effective safeguarding process.
- Reducing the impact of domestic abuse on children and young people.
- Reducing youth offending and anti-social behaviour

The Children's Trust is chaired by the Lead Member for Children's Services, who is also a participating observer member of the CBSCB and the Trust has appropriate representatives from key partners, including the voluntary sector. The Independent Chair of CBSCB is a full member of the Children's Trust and attended to all of its meetings in 2012-13.

All partner agencies have their own appropriate governance arrangements to ensure that safeguarding is a priority at both a strategic and operational level. For example: Bedfordshire Police have a Children and Young Person Strategic Group chaired by the ACC (Crime and Local Policing) which meets every 3 months. All issues affecting service delivery for Children and Young People are dealt with by this Group. The Police employ a Youth Coordination and Development Officer who sits on this group and assists the ACC to deliver the Strategic intent through the PPU Detective Superintendent.

Financing and staffing 2012/13.

The work of the CBSCB is funded through contributions from partner agencies in line with a funding formula agreed by agencies in 2010 and adhered to since that time. As the Business Support Unit and training function of the Board is shared with the Bedford Borough Safeguarding Children Board the budget is managed centrally.

It has been agreed that partner agencies maintain their budget contributions in 2013/14 at the level of 2012/13.

In January 2013, Bedford Borough Council commissioned a review of the joint working arrangements with CBSCB. This review has been carried out with the cooperation of all partners in both Boards and reported in the summer of 2013. At the time of writing this report, agreement has been reached to disaggregate the joint business support arrangements for the two Boards from 1st October 2013. This will lead to changes in the

financing and staffing arrangements of CBSCB for the latter part of 2013/14. The training function will be subject to a review in 2013/2014.

The contributions to and expenditure from the CBSCB budget for 2012/13 were as follows:-

Income 2012/13		Expenditure 2012/13	
Agency	Contribution (£)		Budget (£)
BBC	51,927.77	Staffing costs*	158,625.79
CBC	51,927.77	Cost of Independent chairs (2 boards)	38064.88
Police	25146.37	General costs i.e. printing, website maintenance, venue costs, stationary.	6153.07
NHS Bedfordshire	69,437.10	Total:	202,843.52
Probation	7,906.10		
Cafcass	1100.00		
Total:	207, 445.11		

* Staffing costs include salaries for the 1.0 FTE Business Manager, 1.0 FTE administrator, 1.0 FTE Training Officer, 0.5FTE Training Commissioning and Development Manager

4. Child Protection Activity and Performance in Central Bedfordshire

During 2012/2013 regular reports in relation to child protection activity and performance have been presented to CBSCB. The following illustrates some of the safeguarding system's activities with children and families compared with previous years and identifies trends and changes in activity locally, including comparative data for the year ending 31st March 2012.

	National 11/12	Statistical Neighbour 12/13	CBC 11/12	CBC 12/13
Number of Children in Need	1837	1487	1480	1631
% of referrals that led to initial assessments.	74.6%	77.7%	76.8%	82.3%

	CBC 2011/12	CBC per 10,000 population 11/12	National 11/12	National per 10,000 population 11/12	Statistical Neighbour 11/12	Stat neighbour 11/12 per 10,000 population	CBC 2012/13	CBC Children per 10,000 population 12/13
Number of children subject to a Child protection Plan	227	40	213	37.8	170	30.2	266	46.5
Children becoming subject of a CP Plan	268	47.5	259	46.0	204	36.1	262	45.8

Covers annual period from 31 March to 31 March

The following is a summary of child protection data in Central Bedfordshire for 2012/13:-

- 17.2% increase in numbers of Central Bedfordshire children subject to a child protection plan. In Central Bedfordshire children are becoming subject of a child protection plan at a rate slightly above the national average. Central Bedfordshire has more children on plans than the national average. These figures are higher than our statistical neighbours and audit activity is on going to check that thresholds are correct.
- Although the number of children subject to a child protection plan has increased year on year since 1 April 2009, during 2012/13 the number becoming subject to a plan decreased.
- 93.2% of children considered at an initial conference were made the subject of a plan (up 3% on 2011/12).
- Relative percentage of section 47 enquiries¹, Initial Child Protection Conferences and child protection plans starting all remain close to the national performance and statistical neighbour performance.
- Child protection plans ceasing in 2012/13 increased by 1.8% compared to 2011/12. As a result of the actual number of discontinued plans remaining lower than the number starting, the overall child protection population has increased.
- The predominant categories of plan in 2012/13 were neglect (44%), compared to 41% nationally (17% less than 2011/12) and emotional (40%), compared to 30% nationally (12% higher than 2011/12).
- Children subject to a plan on more than one occasion for the period was 20.2% (2012/13), compared to 9.3% (2011/12). Compared to national performance (13.8%) and performance of statistical neighbours (12.9%) for 2011/12.
- During 2012/2013 4% of children who had been subject to a child protection plan for more than two years had their plans discontinued. During 2011/2012 6.8% of

¹ Section 47 enquiries – A section 47 enquiry is initiated to decide whether and what type of action is required to safeguard and promote the welfare of a child who is suspected of, or likely to be , suffering significant harm,

children who had been on a plan for more than two years had their plan continued compared to 5.6% nationally.

- 100% of children subject to a child protection plan have had their reviews held within timescale during 2012/13.
- 100% of children subject to a child protection plan have been allocated a qualified social worker
- The predominant age of children subject to a child protection plan was 0-4 years (41%) follows by 5-9 years (32%). This is similar to the national data.
- Looked after children in Central Bedfordshire have increased by 22.1% between 31/03/12 and 31/03/13. In 2012/13, 132 children became looked after and 85 children ceased being looked after compared to 123 admissions and 94 discharges from care during 2011/12. This represents a 7.3% increase in the number of children starting to be looked after over the year.

Whilst there has been an increase in the number of children subject to a child protection plan at period end, the number of section 47 enquiries and the number of children subject to an initial child protection conference and the number of children becoming subject to a plan have all fallen.

Due to the increase in children who have had a plan on more than one occasion Conference chairs and operational managers in Children's Social Care will review individual cases during 2013/14 to identify further learning and ensure that subsequent action to prevent the risk of harm will be carefully monitored.

The increase in children subject to a child protection plan and the general increase in safeguarding work is a frequent subject of discussion at Board and sub-group meetings. This leads to agencies looking to ensure their resourcing and resilience can cope with increasing pressures and highlighting these pressures to the Board.

At the start of 2012-13, the Board recognised the need for its performance reporting to more closely follow the suggestions within the Professor Munro's report on Safeguarding. As a result the Board Chair, Business Manager and the Chair of the Board's Performance sub-group were actively involved in regional Children's Improvement Board work to develop a new performance framework for Safeguarding Boards. This work was finalised in March 2013 and the new approach to performance reporting is being brought into practice during 2013-14.

5. Audit and Challenge

One of the core functions of the CBSCB is to monitor and evaluate the effectiveness of activities to safeguard and promote the welfare of children and advise organisations on ways to improve. This involves carrying out case reviews and audit work but also learning from the judgements of external inspections and audits, such as Ofsted and the Care Quality Commission (CQC). This work has been on going all year.

External Inspection and Audit

Safeguarding and Looked After Children services in Central Bedfordshire were inspected jointly by Ofsted and the CQC in February 2012, with the report being published in April 2012. Overall safeguarding was graded as 'Good' and services for Looked After Children

were graded as 'Adequate'. Ofsted's judgements against the twenty specific categories of performance were all good or adequate with the exception of the 'Being Healthy' judgement for Looked After Children which was graded as 'Inadequate'. This judgement was discussed within the Children's Trust and the Board was assured by CBC and NHS Bedfordshire that there were no safeguarding risks to individual children as a result of a difficulty coordinating health systems for looked after children. Favourable comments were made by the Ofsted report about the partnership work of the Board. There was one area for the Board to improve, which related to the need to work more closely with NHS organisations to evaluate the impact of training. This improvement was prioritised within the Board's training function during the year and evaluations produced

Led by Central Bedfordshire Council, an Improvement Plan was developed to address all areas for improvement identified by the inspection. This Plan was implemented throughout the year and progress in achieving it was regularly reported to both the Board and the Children's Trust.

In June 2012, the Joint Steering Group discussed the inspection report on the Bedfordshire Youth Offending Service (BYOS) following a visit by the Inspectorate of Probation. This report gave favourable comments about safeguarding by BYOS and there were no areas for improvement.

In January 2013, Ofsted inspected Bedford Borough's arrangements for the protection of children. The arrangements were graded as 'Adequate'; however the report raised the issue that the joint arrangements between Central Bedfordshire and Bedford Borough LSCBs were not sufficiently servicing the needs of children in Bedford. Bedford LSCB commissioned a review of these arrangements. This led to the proposal to disaggregate the Boards.

Serious Case Reviews

During 2012 – 2013 no individual safeguarding cases reached the threshold requiring a Serious Case Review (SCR), although 6 cases were referred for consideration by the SCR Sub-Group. Three of the cases were referred to the Performance Management and Audit group for a multi agency audits to be undertaken. These three audits have engaged practitioners and managers from the all of agencies involved with the families and the findings and learning from the audits were disseminated to practitioners and managers across all services. Of the other three referred cases - 2 required no further action and 1 case was referred by Luton Safeguarding Children Board as they had safeguarding concerns and the family had previously lived in Central Bedfordshire. On examining this latter case, it was clear that no concerns were identified whilst the family were resident in Central Bedfordshire and as a result no further action was taken by CBSCB in the case. Luton LSCB were kept fully informed of the CBSCB discussions and decision.

Following the publication of Working Together 2013, CBSCB has continued to work with BBSCB on considering approaches to Serious Case Reviews in the future and explore opportunities for developing an agreed approach. However following the decision to disaggregate the business support arrangements for the CBSCB and BBSCB and the review of Board's structure, CBSCB will develop its own independent SCR referral process during 2013.

Child Death Overview Panel

The Child Death Overview Panel (CDOP) is required by the statutory guidelines to review how and why children in Central Bedfordshire die and to ensure that agencies learn from their deaths where appropriate. In 2012-13, 24 child deaths occurred amongst children residing in Central Bedfordshire. Although numbers are small, this is an increase of 7 deaths on the previous reporting year 2011-2012, an increase of 29%, and above the average number of deaths reported in the previous 4 years which was 18 deaths per year. Although every death is a tragedy for those involved with the life of that child, and a rise in deaths is particularly concerning, statistically this increase in small numbers does not indicate that there is a trend of increasing risks to children and there are no common factors which have been identified in the increase in deaths. Locally the number of child deaths has decreased by 42% in Bedford Borough significantly and has increased in Luton by 3%. Due to the delivery of health services across Bedford central Bedfordshire and Luton, the CDOP process is managed across the three LSCBs rather than just for Central Bedfordshire.

Half of the deaths were in the first month of life and 67% in the first year of life. 6 of the deaths reported were unexpected deaths i.e. the death was not anticipated in the 24 hours before the child died.

The following is a summary of the work of the CDOP during 2012/13:-

- The Panel met on eight occasions during 2012/13 and completed full reviews on 27 Central Bedfordshire children, of whom 44% were aged 0-28 days and 22% were aged between 28 days and 1 year.
- The main category of death was a perinatal event (44%) followed by chromosomal, genetic or congenital problem (19%).
- Modifiable factors were identified in 44% of cases, including unsafe sleeping practice, smoking and raised Body Mass Index (BMI).

As a result of the action plans and lessons learned from child deaths reviewed over the last four years, CDOP are working with Public Health to ensure there are pathways in place for pregnant women with raised BMI to access healthy living choices & reduce weight in pregnancy. The CDOP also ensures Public Health is aware of the modifiable factors in relation to smoking & receives feedback on campaigns & pathways for pregnant women who smoke. Central Bedfordshire Public Health is working jointly with Public Health in Luton to deliver workshops to health and social care staff concerning safe sleeping messages for parents.

A more in depth analysis of deaths reviewed over a 4 year period is available in the CDOP annual report 2012-2013 which is also published on the CBSCB website www.bedfordshirelscb.org.uk

Joint Performance Management and Audit Group

The Joint Performance Management and Audit Group undertakes multi agency audits of specific cases, re-audits to evidence changes in practice as a result of learning from previous audits, and disseminates learning and messages from these audits to practitioners and managers across agencies for their reference and use in team meetings and briefings. The Joint Performance Management and Audit Group also receives

updates from agencies in relation to auditing undertaken by individual partners.

Key learning is always shared with the LSCB training managers to ensure inclusion of local lessons in the multi-agency training programme and to inform the content and delivery of learning events.

During 2012/2013 case audits have been undertaken in relation to:

- specific cases referred for review by partners, or by the Serious Case Review Panel (3 cases)
- themes identified to support Business Plan objectives or specific areas of practice i.e. Strategy meetings and section 47 enquires (4 cases); learning disability (1 case) core group meetings; domestic abuse (1 case) and children subject to a plan on more than one occasion (1 case) and;
- re-auditing issues identified in previous audits where practice concerns have been identified.

Some of these audits have been independently led and commissioned with neighbouring LSCBs, the findings and outcomes of which will be reported to the Board in September 2013. Audit activity is planned to increase in 2013/2014.

There were several key areas of learning from audits that have been implemented as follows during 2012/13:-

- Children's Centres – staff have contributed to several individual case audits and as a result better processes for recording, reporting and escalation of concerns have been reviewed and implemented;
- Multi Agency Public Protection arrangements – agency leads have raised awareness within their own organisations of the purpose of MAPPA. the remit and scope of different risk assessments and definitions of harm and the importance of joint working;
- Reporting templates – templates for child protection conference reports have been revised and re-launched for use by Police, Health and schools representatives;
- Reports for Child Protection Conferences – enhanced report formats including improvements on the child's school and chronology of events which is now incorporated within the Safeguarding Children procedures.
- A review by the Designated Doctor and Nurse of the arrangements for undertaking child protection medicals in particular:
 - to promote photographic recording of injuries at the same time as medicals;
 - child protection medical reports identifying what information is shared with health professionals at the time of the medical and who is present, and
 - prompts to key agencies to consider how an appropriate medical assessments can be undertaken when responding to a distressed child;
- Central Bedfordshire Council has ensured that that all staff undertaking assessments are fully qualified.
- Agencies, particularly Children's Social Care have reiterated the need to ensure appropriate inclusion and attendance at strategy meetings.
- Specific training has been delivered on the chairing and contributing to core group meetings'.

Issues arising from audits in relation to domestic abuse have resulted in the LSCB retaining the focus on this area as one for future improvement in Central Bedfordshire, by

inclusion in the business plans for 2013/14 and as a key priority for further work by partnerships. A pilot project in Central Bedfordshire and Bedford Borough in relation to information sharing between the Police and Schools about domestic abuse incidents is currently underway as a means of ensuring earlier identification of and response to the impact of domestic abuse on children and young people. The outcomes will be evaluated.

Section 11 Audit

Section 11 of the Children's Act sets out a requirement that partner agencies maintain safeguarding standards. There are eight standards and most LSCBs regularly require agencies to self assess their compliance with those standards. This is known as Section 11 auditing and during 2012 /13 an in-depth audit was undertaken by the CBSCB in conjunction with Luton and Bedford LSCBs focusing on two of the s11 standards:

- **Senior management commitment to the importance of safeguarding and promoting children's welfare.**
- **Effective inter-agency working to safeguard and promote the welfare of children.**

The remaining six standards had been self-assessed by the partners during Spring of 2012 and their findings were reported to the LSCB's Strategic Board as part of the development of last year's Annual Report.

The findings of each partner regarding the two key standards were reported to their peers at a specially convened workshop in autumn 2012 with the Councils reporting their findings to partners at the autumn meeting.

There was evidence of the following improvements in safeguarding from the agencies' presentations;

- A strong commitment and understanding of the importance of safeguarding at a senior level.
- A number of informal forums within agencies have been established to address safeguarding policy, practice and concerns.
- An increased understanding about what needs to be done, including awareness and anticipation of safeguarding issues and activity to address the issues. Agencies are responding very positively to inspections and audits.
- Greater integration between children/young people services and adult services.
- Learning from local and national Serious Case Reviews becoming more routinely embedded into training.
- Greater use of escalation procedures to raise concerns and evidence of its use between agencies.
- Improved involvement and engagement with children and young people.
- More internal training across a broader safeguarding agenda.
- More single agency safeguarding audits being undertaken

Areas for further consideration by the Boards in relation to the two standards are:-

- Agencies identified challenges with the Common Assessment Framework (CAF) particularly for those agencies working across three local authorities with different CAF processes. Stronger links between the CAF and early help/intervention need to be developed.

- Dissemination of learning from SCR's and case file audits needs to be even more embedded into practice and as part of reflective supervision. There is a need for agencies to agree how to evidence that the dissemination of learning is done and the impact it has on the outcomes for children.
- It was noted that as more training is delivered internally by individual agencies, this will have an impact on the take up of multi agency training provided by the Board. Agencies need to contribute more effectively to the multi-agency training process and increase their challenge around commissioning
- The Strategic Board need to ensure that there is effective communication with frontline workers and vice versa.
- The co-location of multi-agency teams, needs to continue to be considered as opportunities arise.
- Commissioners, including the new Clinical Commissioning Groups have a challenge when commissioning Independent Contractors in ensuring that they are Section 11 compliant.
- Boards need to work with voluntary and faith groups to support them in undertaking Section 11 self assessments.
- A forum to be considered for the Councils and partner agencies to discuss the different multi-agency panels and processes across Bedford Borough and Central Bedfordshire.

The findings of this audit were used to develop the business plan for the CBSCB and individual partner planning processes for 2013-14.

Additional information in respect of the Section 11 audit can be obtained from the CBSCB Business Manager.

6. Engagement with & participation of children

Individual agencies engage with children, young people and their families on a day to day basis and in addition put in place a number of additional activities to ensure the provision and delivery of services are in accordance with the views and wishes of children and their carers. Their views are then used to develop and improve services. Engagement opportunities that have informed the work of the CBSCB and partners include:-

Make Your Mark Survey

Undertaken by Central Bedfordshire's Youth Parliament this was the most active survey in the East of England, engaging 5990 young people to vote. The findings of the survey identified several local issues as key priorities including making public transport cheaper, better and accessible for all; getting ready for work; and a curriculum to prepare us for life.

The Second (Local) Survey

Undertaken in Autumn 2012 involving over 3000 young people, which identified the 6 most important issues for young people in Central Bedfordshire as follows (in order of importance); Crime (relating to the fear of crime); Careers and Finance; Bullying (including cyber bullying); Things for Young people to do; Wellbeing; and Public Transport

Child Participation

In early 2012 Central Bedfordshire's Children's Participation Officers met with a group of young people who had been on child protection plans. Feedback indicated that frequent consultations with young people would support them in voicing their wishes and feelings and would also encourage ways of exploring how to achieve better engagement of families. Further consultation was undertaken during summer 2012 with the aim of exploring ways in which young people could build relationships with social workers and improve the ways in which young people can convey their views and wishes in respect of staying safe.

Audit activity

A key focus of audit activity and improvement in Children's Social Care has been ensuring the voice and views of the child is evidenced in assessments and records of meeting. Audits evidence improvements however further work needs to be done to ensure that practice is consistent and quality recording and engagement is achieved.

Conferences

In 2012, 40 questionnaires were completed by parents arising from attendance at 13 initial conferences and 27 review conferences. The feedback was positive with a significant majority of the parents attending the conferences rating the experience as good in terms of the support they received, their understanding of the purpose of the meeting and how valued and respected they felt and their ability to share their views. Actions arising from the survey included the need to ensure timely production and sharing of social reports in advance of conferences. The survey is being repeated in 2013.

Health

The PCT/BCCG gathers information on patient experience including children and young people which informs commissioning intentions/ arrangements. In addition the PCT/BCCG undertakes both announced and unannounced visits to health providers and engages with children and their families about the services they receive. Bedfordshire Community Health Services Children's Services also participate in the patient survey "All Ears".

Police

Bedfordshire Police's Youth Coordination and Development Officer sits on the Children and Young Persons Strategic Group and is able to ensure that young people's views are fed directly to the ACC. In addition the Police's Local Policing Teams link with safeguarding and PSHE leads for each school. Their focus on the dangers of Social Networking on the internet.

7. Achieving our priorities

Priority 1: Early Signs and intervention in respect of physical, emotional abuse and neglect

The effective delivery of help early in a child's development or early in time when things start to go wrong, leads to good outcomes for the child and potentially reduces the need for agencies to be involved in the long term. This is therefore a key a priority area of work for the Board.

Achievements in 2012/13

- Delivered training to improve the awareness of early signs of abuse and neglect with 100% of GPs have a named Safeguarding Lead GP who has completed this programme. 2300 individuals undertook online e-learning courses to raise awareness (including 86 young people aged 11-18, 73 of whom were considered competent). Validation and review of organisations basic safeguarding training was offered free of charge to all Board partners.
- Three Early Intervention Social Workers appointed to support work at the Centres in the areas of highest deprivation (Leighton Buzzard/Dunstable North, Downside/Houghton Regis, Flitwick/Sandy) with increasing awareness of Early Help processes in these areas.
- Children's Centres have been involved in 20 CAFs and acted as the Lead professional in a further 11 assessments.
- Board adoption of the Early Help Offer for CBC, including guidance for completing the Early Help Assessment (825 assessments completed and activity undertaken with more than 400 families during 2012/13).
- Additional CAF support officer appointed to work with schools and settings to enhance understanding of the CAF process and enable more effective support with the establishment of a Team around the Child process. Confidence has increased in Early Help Assessment (EHA) and Team around the Child (TAC) progress and a subsequent increased number of assessments with SMARTer objectives.
- CAF forms revised to make them more user friendly and increase levels of engagement from all sectors, particularly with health teams.
- CAF training has been reviewed to include a 3-year refresher to enhance work on smart objectives.
- Bedfordshire Probation "Caring Dads" programme: 10 (with 35 children between them) Central Bedfordshire men attended the program in 2012 with research findings evidencing significant improvements in men's awareness of children's developmental needs, knowledge and awareness of domestic abuse and greater understanding of what constitutes child-centered fathering. The project has recently been nominated for a Howard League for penal reform award.
- A new multi-agency e-learning training course on risk assessment in safeguarding and awareness of child sexual exploitation.
- CBSCB staff delivered face to face learning and development opportunities to consider and explore the impact of impaired parenting capacity arising out of parental mental illness, domestic abuse and parental substance misuse.
- Delivery of 'Child Centred Practice when Working with Resistant Families' courses to extend knowledge and understanding of the impact of neglect, and its impact on workers' behaviours

Challenges and actions for 2013/14:

The Board sees the achievements of 2012-13 as a start in developing the improving Early Help rather than completed work; this will always be work in progress. The new national Working Together Guidelines, issued in March 2013 includes an expectation on Boards to evaluate early help to families and children. Some early work in evaluating the offer has been undertaken by the Children's Trust, including the involvement of young people. This Board priority needs to incorporate the contribution of all partners to early help and initial evaluations of cases are being carried out by a sub-group of the Children's Trust. The work will be discussed at the Trust in December 2013 and then be refined into a working model for evaluating early help. This is reflected in the CBSCB Business Plan for 2013 – 2014. The Board will seek assurance during 2013 – 2014 of the effectiveness of early help services from all partner agencies to understand the different activities, strategies and performance measures that are in place and in development.

Priority 2: Domestic Abuse

Local and national reviews of cases clearly show that families where there is domestic abuse lead to children experiencing emotional and physical harm.

What have we achieved?

- 'SORTED' commissioned to deliver one to one therapeutic interventions for children aged 5 – 13 years affected by domestic abuse. The CBC Community Safety Partnership is procuring additional counselling provision for children and young people affected by domestic abuse.
- Central Bedfordshire CSP and Children's Services have jointly commissioned a project worker to deliver the "Relay Initiative" in five schools across particular domestic abuse hotspots within Central Bedfordshire. The Relay Initiative focuses on early reporting to schools when a child or young person has been involved in a domestic abuse incident.
- BPT has worked with CBC to deliver the Integrated Domestic Abuse program (IDAP) for men not supervised by the Criminal Justice system. IDAP provides enhanced early intervention regarding domestic abuse. 12 men have commenced the program to-date and findings of effectiveness, delivered by Bedfordshire University will be available at the end of the financial year.
- Inception of the Domestic Abuse Repeat Offender team (DARO) in Feb'13 to enable us to better support vulnerable victims of domestic abuse and their associated children, which have considered dealt with 87 different offenders.
- Multi-agency training in relation to domestic abuse, including the impact on children and young people delivered to 63 attendees; 'working with perpetrators' and a new course on 'awareness of female perpetrators' attended by xx people. Free events were also delivered for CBSCB partner agencies and voluntary sector to familiarise those working regularly with children and families in domestic abuse situations, with the role and function of the MARAC.
- Delivery of a face to face course on the Impact of Domestic Abuse on Children and a Teen and Dating Violence course that has been heavily oversubscribed and co-delivered with public health colleagues.

- Delivery of online E learning package - 'Domestic Violence Awareness'. Any applicant who has not completed the Bedfordshire Domestic Abuse course was requested to undertake this online course prior to attending any DV themed CBSCB course. This has led to increased awareness of domestic abuse;
- Responded to messages arising out of the Bedford Domestic Homicide Review (2011).
- Domestic Abuse Awareness Raising Forum' held free of charge for frontline professionals and voluntary organisations across Central Bedfordshire raised awareness of domestic abuse and the services available.
- Commenced a scrutiny panel between partners to review 2 cases of domestic abuse per year.

Challenges and actions for 2013/14

Domestic Abuse continues to be a priority for the Board. The work of the Bedfordshire Domestic Abuse Partnership and Central Bedfordshire CSP continues to drive partners' operational work on domestic abuse. Increasingly the CBSCB role needs to be the evaluation of the success of partners work and in the coming year the Board will strengthen its performance monitoring of domestic abuse initiatives and its evaluation of that work.

Priority 3: Child Sexual Abuse and sexual abuse through exploitation.

During the past eighteen months there has been a growing awareness of Child Sexual Exploitation and in November 2011, the Government published its National Child Sexual Exploitation Action Plan which identified LSCBs as the responsible partnership for implementing the Plan. CBSCB agreed to work jointly with the Luton and Bedford Boards to develop and implement the local version of the national Plan and a Task and Finish Group with representatives from across all three Boards has since then been managing that implementation.

What have we achieved?

- A strategy and action plan developed and adopted by the CBSCB with progress reports presented at the Strategic Board, Joint Steering Group and Children's Trust were also briefed on the work.
- Completed a review of sexual exploitation procedures resulting in changes to practice and support processes available to work with children and young people.
- Piloting of Sexual Exploitation Risk Assessment Conference (SERAC) meetings from March 2013.
- The LSCB website contains information for professionals, children young people and parents/carers.
- A new therapy service for young people with sexual behaviours that are a risk to their peers (MST-PSB) was developed, which has had three referrals during 2012/13.
- Launched a leaflet for professionals and a CSE Toolkit in respect of identifying child sexual exploitation.
- Six briefing events were held jointly by Bedford, Central Bedfordshire and Luton LSCB's, the third of which was used to launch the CSE Toolkit and promote awareness of the newly developed SERAC and free online E learning course awareness of child sexual exploitation. These events were well received and

attended by 697 workers, assisting in the identification of further development needs.

- Four courses were externally commissioned on the themes of 'worrying adolescent sexual behaviours' and 'prepubescent sexual behaviours'. 99 workers and volunteers attended, further courses have been commissioned for 2013-2014.
- The Lucy Faithfull Foundation delivered 'what's love got to do with it?' in response to workers requiring more strategies with young people who are at risk of sexual exploitation.
- Two twilight briefings were held for Head Teachers and Chairs of Governors, including independent schools and academies. The briefings focussed on grooming behaviours exhibited by a sexual offender in a first school. 94 individuals attended, strengthening the links between the work of the LSCB and schools. All schools have been asked to be vigilant about this area of work. One notable outcome was an increase of applications for safer recruitment courses. The course has been fully revised and jointly delivered with the LADO's. A total of 52 individuals in key management roles attended these courses

Summary and actions for 2013/14:

The Pan-Bedfordshire CSE Task and Finish Group continues to develop its work addressing the five shared key strategic priorities as follows:-

1. **Preventing & intervening early** to prevent the occurrence of child sexual exploitation and should it occur to intervene at an early stage to reduce harm to actual and potential victims.
2. **Safeguarding** to ensure that in all circumstances the safety and welfare of individual children and young people is of paramount importance
3. **Disrupting activity** in the interests of protecting children, then the disruption of offenders grooming or exploitation activities is a legitimate and appropriate response which can only be successfully achieved by strong partnership working
4. **Bringing offenders to justice** when sufficient evidence can be obtained to support a prosecution.
5. **Engendering public confidence** by raising general awareness of the issue and showing all communities that a proactive and proportionate response will be made to the risk

This is reflected in the CBSCB Business Plan for 2013/14 with the intention that the work being carried out by the Task and Finish Group will become absorbed into normal management processes by the end of the year and the Board's role will then focus more on evaluating partners' effectiveness in countering sexual exploitation

Priority 4: Develop the CBSCB Board

During 2012-13 CBSCB prioritised a number of issues which were designed to improve the functioning of the Board and the partnership it coordinates. These included working to improve performance monitoring and auditing, recruiting and other lay members to ensure the full Board complement, developing relationships with new bodies such as the Health and Wellbeing Board, improving work with schools and better dissemination of information from CDOP and the section 11 audit processes.

What have we achieved?

- Central Bedfordshire Council present timely performance information to each Strategic Board meeting with audits and analysis of performance information undertaken through the Joint Performance Management & Audit Group
- Board members played an active part in developing a regional performance framework for LSCBs which was published in March 2013.
- Lay Member recruitment to CBSCB has been completed.
- Regular discussions at the Board regarding the new NHS arrangements and engagement with Clinical Commissioning Groups (CCGs), a CCG representative is appointed to the Board.
- Support and information provided to CBC education, governors, staff of individual schools and academies to improve safeguarding for pupils and students. The Chair of the Board has also discussed safeguarding with governors at their forums and specific sessions addressing 'safer staffing'.
- Lessons learned & emerging themes arising from the review of child deaths have been widely disseminated via quarterly multi agency CDOP teaching sessions, level 3 safeguarding training, GP safeguarding training and via a CDOP newsletter.
- CBSCB Chair presented the 2011-12 Annual Report to the Health and Wellbeing Board agreeing future approaches to communication.
- Successfully held a workshop with Luton and Bedford LSCBs for partners to challenge each other on their performance against s11 safeguarding standards

Challenges and actions for 2013/14

Several of the streams of work within this priority were delayed as the publication of Working Together and the regional performance framework for LSCBs arrived later than anticipated. As a result some of the activity has been rolled over into the 2013-14 CBSCB Business Plan for completion.

The new performance framework should be in use by the Board during the Autumn 2013. This is only the first step as partners need to be able to fulfil their responsibility to both supply information and analysis for discussion and their peers need to then produce supportive yet challenging discussions so that safeguarding can improve.

The approach to dissemination of information will be developed (along with the performance reporting process) to create a learning and development framework as required by Working Together 2013

Priority 5: Implement or Monitor the implementation of relevant recommendations from the Munro Review, and Ofsted, CQC/IST & HMIP Inspections

At the start of the 2012/13 year, the Board was waiting for the publication of new Working Together guidelines following the Munro Review. It was also awaiting Ofsted/CQC Reports following inspections of Safeguarding and Looked After Children and the effectiveness of the Bedfordshire Youth Offending Service (BYOS). Following an Ofsted Inspection of Child Protection in Bedford Borough in January 2013, a review of the joint arrangements between CBSCB and BBSCB was commissioned. Although such a review was not foreseen in the CBSCB Business Plan, the review became an immediate priority for the Board. This review has now been concluded and has led to the disaggregation of the two Boards.

What have we achieved?

- Monitored the implementation of the partners' Improvement Plan following the February 2012 Ofsted Inspection and addressed all issues regarding the Board's responsibility for safeguarding raised by the inspection.
- The Joint Steering Group discussed the BYOS inspection report and agreed that there was no need for action by the Board.
- The Board's Business Plan prioritised the Munro report's recommendations regarding LSCBs, namely the production of an annual report, the evaluation of early help, and the consideration of systems methodology for case reviews. These recommendations were further clarified in Working Together 2013.
- Fully engaged in the review of joint arrangements with the BBSCB, which will report in the summer of 2013.

Challenges and actions for 2013/14

The Working Together guidelines were not published until March 2013. During the coming year, much of the development of the Board will therefore be about implementing the changes required by the new guidelines which include the development of a Learning and Improvement framework, welcoming new Board members, improving its focus on outcomes and developing an appreciation of the systems approach to case review. CBSCB will also need to ensure that it effectively monitors the implementation of the Working Together guidelines by individual partners where they have specific responsibilities.

8. Multi-Agency Training

The Boards Training function provides multi agency safeguarding training in both Bedford Borough and Central Bedfordshire.

During 2012/13 there were 63 face to face courses delivered over 74 days to a total of 1,848 delegates. Satisfaction with courses ranged from 95-98%. Face to face learning and development activity ranges from the sixteen 2 day Safeguarding and Interagency Working courses delivered over the year to ½ day refresher courses for schools and a variety of specialist courses for workers and volunteers. Please see appendix **xx** for the 2012/13 training calendar and details of the outcomes and satisfaction with courses.

During 2012/13 the range of courses offered was extended and several packages completed that were essential pre-requisite learning for delegates undertaking some face to face courses. Notable aspects of the training include:

- All learning events were regularly over-subscribed and extra 2 day courses have been arranged to accommodate delegates from across the extended children's workforce.
- Partners are provided with quarterly attendance, end of day and impact evaluation reports.
- Evaluation is through quantitative and qualitative data to seek to assess the actual impact of training on professional delivery of safeguarding services.

The Training Development and Commissioning Manager works closely with Agency Training Managers to undertake an ongoing review of courses that are informed by the CBSCB Business Plan 2012-2013 priorities.

Free Online E learning has continued to be provided with a charge made for Private and Independent Organisations. The On Line E learning menu has been extended during 2012/13 to offer a range of online Awareness of Child Abuse and Neglect courses. The number of delegates undertaking online learning courses have increased considerably between 11/12 and 12/13. Evaluation of the e-learning courses demonstrates that Learners find the system easy to use and effective.

Challenges and actions for 2013 – 2014

- In response to the disappointing completion rate of 85% the training function have adopted an automated Learner Self Registration system for On line learning which will respond and allow immediate access to training, thereby minimising delay or postponement to a worker or volunteer motivated to learn and extend his or her safeguarding knowledge. This facility will also provide an automated reminder and an enhanced BBSCB/CBSCB management system. This system will go live in September 2013.
- In order to ensure appropriate quality of whole school training and the training skills of facilitators the Training Function has been commissioned to provide 10 whole day 'train the trainer' face to face courses for designated personnel in CBC schools and academies, and a package that can be customised for the particular setting. In addition CBSCB will provide tri-annual update/network meetings for these trainers.
- Raising the workforce awareness of the needs of young carers and other particularly vulnerable children and young people will be a key goal for 2013-2014 and will assist with promotion of the available CBC early intervention services.
- The charitable and funding arrangements pertaining to community interest companies and other 'social enterprises' were researched by BBSCB/CBSCB with the advice of the Charities Evaluation service and the VOCyfp. The information will be used going forward to review charging policy and ensure fairness and best value for BBSCB and CBSCB partners in 2013-2014.
- The BBSCB/CBSCB Training Function is currently under review.

9. Priorities for CBSCB for 2013-14

In its discussions about priorities for 2013-14, the Board was keen to improve safeguarding in Central Bedfordshire and ensure that both national and local safeguarding themes were taken forward. However, it was also aware that there are currently very real pressures on resources across partner agencies and that in this situation a few priorities with significant progress was likely to give greater improvement than very wide ranging priorities which would need substantial investment of time and budgets. As a result the Board agreed four high level priorities:

- Priority 1: Evaluating the Impact of work undertaken by partners in relation to domestic abuse
- Priority 2: Ensuring an effective response to the Sexual Abuse of Children & Young People through Exploitation (CSE)

- Priority 3: Evaluating the impact of early help
 Priority 4: Implementation of Working Together 2013 and findings of the local CBSCB /BBSCB Review of Joint Working

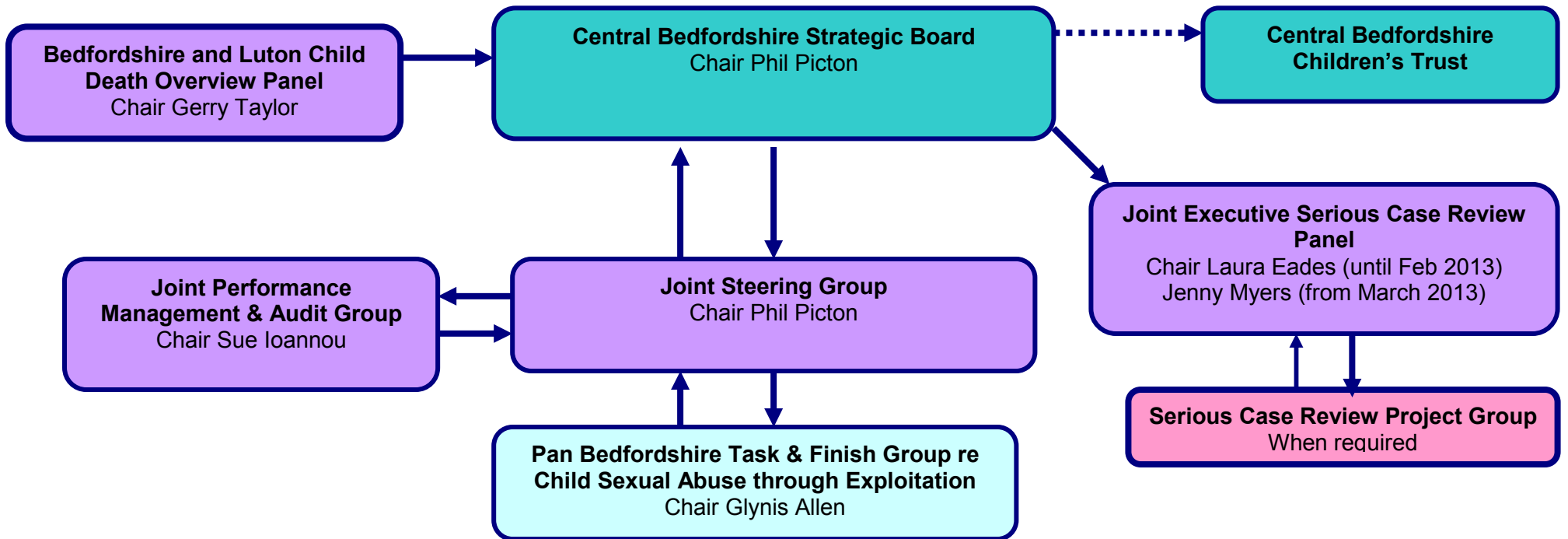
Glossary:

ACC	
ADCS	Association of Directors of Children's Services
BBSCB	Bedford Borough Safeguarding Children Board
BCCG	Bedfordshire Clinical Commissioning Groups
BDAP	
BMI	
BPT	
BYOS	Bedfordshire Youth Offending Service
CAADA	
Cafcass	Children and Family Court Advisory and Support Service
CAF	
CAMHS	
CBC	Central Bedfordshire Council
CBSCB	Central Bedfordshire Safeguarding Children Board
CDOP	Child Death Overview Process
CEOP	
CFR	
CHUMS	
CPP	Child Protection Plan
CQC	
CSE	
CSP	
CTB	Children's Trust Board
CYPP	Children and Young People's Plan
DA	
DASH	
DARO	
DfE	Department for Education
EHA	Early Help Assessment
EoE	
GP	
HMIC	
HMIP	
IDVA	
LA	
LADO	Local Authority Designated Officer
LSCB	Local Safeguarding Children Board
MAPPA	
MARAC	Multi Agency Risk Assessment Conference
MASH	
M-Doc	
MPU	
MST-PSB	
NHSCB	National Health Service Commissioning Board
OLIT	

PALS	
PCC	
PCSO	
PCT	
PPU	Public Protection Unit (Police).00
PPUST	
PSHE	
RIU	
SALT	Speech and Language Therapy
SCIE	The Social Care Institute for Excellence
SCR	Serious Case Review
SEPT	
SERAC	Sexual Exploitation Risk Assessment Conference
SHA	
SIG	
SIU	
SLA	Service Level Agreement
SMART	
SUDI	Sudden Unexpected Death in Infancy
TAC	Team Around the Child
VSOMT	

Appendix A

Central Bedfordshire Safeguarding Children Board 2012 – 2013



Appendix B

Membership and attendance at the three meetings of the Strategic Board for the Central Bedfordshire Safeguarding Children Board during April 2012 – March 2013

Agency	Officer	Attendance by Agency
Bedfordshire Police	Nigel Stone, Detective Inspector	3
Bedfordshire and Luton Clinical Commissioning Groups	Anne Murray, Director of Quality & Nursing	3
BCCG	Helena Hughes, Designated Nurse for Safeguarding Children & Young People	
SEPT Community Health Service Bedfordshire	Stephen Porter	3
SEPT Community Health Service Bedfordshire	Dawn Andrews, Head of Service Safeguarding Children & Vulnerable Adults	
Bedford Hospital	Lynda Fitzgerald, Clinical Business Unit Manager Women & Children's Services	3
Bedford Hospital	Nina Fraser, Director of Nursing	
Lead Member for Children's Services	Cllr Mark Versallion, - Executive Member for Children's Services	3
Deputy Chief Executive / Director of Children's Services	Edwina Grant, Central Bedfordshire Council	
Central Bedfordshire Council	Stuart Rees, Assistant Director for Ault Services	
Central Bedfordshire Council	Sue Ioannou, Head of Quality Assurance CRS	
Central Bedfordshire Council	Sue Tyler, Acting Assistant Director	
Central Bedfordshire Council	Yolanda Corden, Interim Assistant Director Operations	
Bedfordshire Probation	Emma Osborne, Assistant Chief Officer	1
Cafcass Luton, Herts and Beds	Jane Stuart, Service Manager	1
Voluntary Organisations for children, young people & families	Linda Bulled, VOCypf Officer	3
Home-Start Central Bedfordshire	Linda Johnstone, Manager	
Independent Chair for (CBSCB)	Phil Picton	3
Officer		
Safeguarding Children Boards	Sally Stocker, Business Manager	3
Safeguarding Children Boards	Sue Fanthorpe, Secretary	3

Appendix C

Multi Agency training provision from April 2012 – March 2013

Course title	No. of courses held	No. of delegates attended
2 day Safeguarding Children course	16	338
2 day Evidence, Reflection & Judgement course	2	36
1 day Domestic Abuse – The Impact on the Child	3	59
½ day Substance Misuse	2	31
1 day Disabled Children	3	52
1 day Parental Mental Health	4	59
½ day Refresher	4	88
½ day Working in Core Groups	2	21
2 hour MARAC briefing	3	44
3 day Supervision Skills	1	17
1 day Constructive Challenge	2	34
1 day Child centred practice when working with resistant families	3	53
1 day Pre pubescent children who display sexually harmful behaviour	2	46
1 day Adolescents who display harmful sexual behaviours	2	43
1 day Leading/ Chairing Core groups	1	17
1 day Teen & Dating Violence	3	66
1 day Safer Recruitment	3	52
1 day What's Love Got To Do With It?	1	17

Training Outcomes

Training outcomes during 2012/13 for those who completed feedback questionnaires on face to face courses were as follows:-

	2011/12	2012/13
Face to face courses:		63
Days of face to face training		74
No. of delegates		1848
Course completely/mostly achieved its objectives	98%	98%
Course completely/mostly relevant to job role	96%	95%
Course completely/mostly enabled development of new knowledge/skills	97%	97%
Significant or moderate impact of training in a multi-agency setting	-	95%

During 2012/13 the online learning courses delivered the following:-

Category	Licences issued	Passes
Awareness of Child Abuse and Neglect	2391	1771
Safeguarding Children from Abuse by Sexual Exploitation	275	124
Parental Mental Health	113	62
Safer Recruitment	100	37
Risk Assessment in Safeguarding	65	28
Safeguarding Everyone: Protecting Children, Young People and Vulnerable Adults	141	89
Total (12/13):	3085	2,111 (68%)
Total (11/12)	1177	1000 (85%)

Feedback from attendees of courses includes:-

"I now feel confident on what signs to look for and how to handle my suspicions."

(An Introduction to Safeguarding Children)

"The kinds of mental health problems, cases and symptoms were really informative. The impact to children and the risk assessment was also valuable in my future career practice."

(Parental Mental Health)

"I will use what I have learned from this course when I become a mentor in September and if someone that I know has any problems in their day to day life I will be able to give them the appropriate advice and listen to what they have to say."

(Think Safe Be Safe Stay Safe)

"A wide range of information, including aspects such as 'Financial Abuse' and 'Institutional Abuse' which have not always been covered in previous training undertaken."

(Safeguarding Everyone: Protecting Children, Young People and Vulnerable Adults)

"When working with children I will feel confident in identifying abuse."

(Awareness of Child Abuse and Neglect – Core)

CONTACT: Sally Stocker,

CBSCB Business Manager

CBSCB Business Unit

Unit 16 Stephenson Court, Fraser Road, Priory Business Park, Bedford, MK44 3WJ. Tel:

03003006676

E-mail: lscb@centralbedfordshire.gov.uk